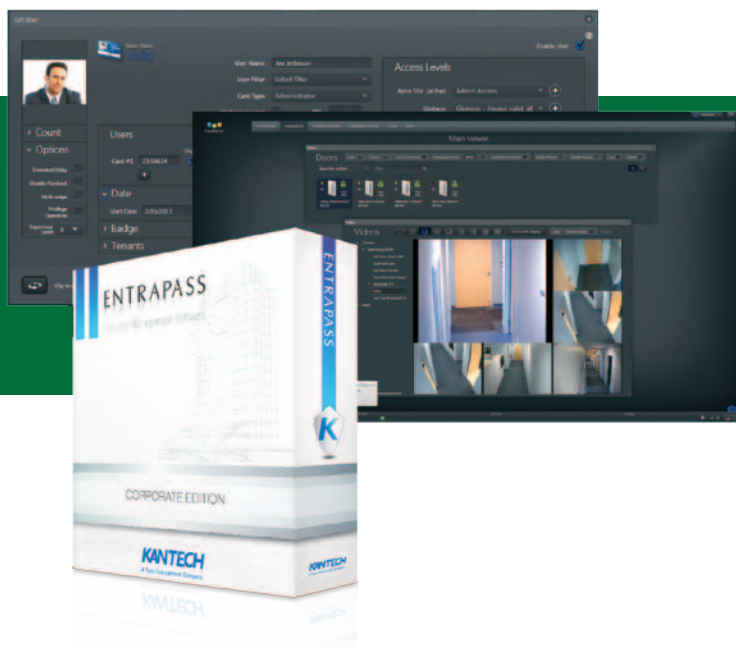


EntraPass Corporate Edition Multiple Workstation Security Management Software



Features That Make a Difference¹:

- Supports up to 20 workstations and controls hundreds of thousands of doors
- Embedded Sybase SQL database engine
- Integrates EntraPass Go mobile app – interact with EntraPass with a few taps on your mobile device
- Integrates EntraPass Web (remote user platform) to manage access control, IP video, telephone entry and/or intrusion security assets
- Supports up to 50 concurrent logins of EntraPass Web and/or EntraPass Go
- Integrates with Exacq video management systems, American Dynamics DVRs/NVRs (VideoEdge, HDVR, ADTVR and Intellex) and DSC PowerSeries and MAXSYS intrusion alarm panels
- Double and triple swipe card at reader (with KT-400 controller) to activate such features as: activate relay, arm alarm system and lock/unlock doors
- Auto Updater automatically updates clients/workstations when server is updated

Network and Web-Ready

EntraPass Corporate Edition is a proven platform that offers the ultimate balance between power and affordability in a network environment. It supports Kantech IP Link which provides a secure and affordable way to manage an access control system over a network using KT-100 or KT-300 controllers. The software integrates advanced security features such as EntraPass Go mobile app and EntraPass Web platform that deliver remote and convenient access to common security tasks and reporting. The enhanced user experience makes navigation and operation easy and intuitive.

Site Architecture

A site is composed of controllers attached to the same communication port or connection. The system can manage up to 32 local sites (consisting of KT-100, KT-200, KT-300 or KT-400 door controllers) per Multi-Site Gateway. EntraPass Corporate Edition also allows users to add up to 512 secure IP connections or dial up sites per Multi-Site Gateway. EntraPass software is scalable – it expands as the security requirements of the business grows.

Redundancy Server

Redundancy server protects the EntraPass database against unexpected failures and is an option available with Corporate and Global Edition software. It features real-time data transfer, creating fully functional redundancy at low cost. In the event of primary server failure, the mirror database automatically launches the redundancy server which supports all the features and functionality of the primary server. Best of all, the redundancy server is easy-to-implement and configure. Multiple redundant servers with mirror database can be used to provide local redundancy in an enterprise environment.

Network-Ready

EntraPass software is compatible with the Kantech IP Link (KT-IP) which uses 128-bit AES encryption to ensure secure communication. KT-IP is an RS-232 to TCP/IP interface that connects KT-100 or KT-300 door controllers to a network. It reduces cabling, and gives the controllers real-time access to information and enhanced functionality by leveraging the bi-directional communications capabilities of TCP/IP. KT-IP integrates seamlessly into an existing TCP/IP network and requires no changes to existing equipment, network, or systems. It also acts as a polling device to ensure the controllers communicate with EntraPass only as required, reducing network traffic.



(1) All of the features listed on this data sheet are available with the latest build of EntraPass v6.01 and higher

Features

Door Controller Compatibility

EntraPass software is compatible with Kantech's complete line of door controllers to create a highly scalable solution that can be deployed within one building or across multiple locations. Depending on software/controller selected, the system easily scales from controlling a few doors to a million doors and managing millions of cards at multiple locations

Remote System Management Tools

The EntraPass Web platform enhances the user experience by delivering remote and convenient real-time access to manage common security tasks and reports from any computer connected to the internet. Security managers on the go can perform a host of functions via EntraPass Web, including locking/unlocking doors, managing cards and schedules, requesting reports, viewing live video, monitoring events by floor plan and so much more. Simply download the EntraPass Web application from any Windows PC web browser and stay connected even when on the go!

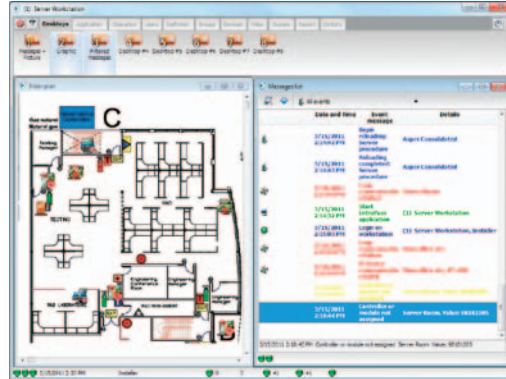
EntraPass Go is a mobile app that allows you to remotely control your security system from anywhere without being tied to a workstation. EntraPass Go puts you in control of your security. It enables you to interact with EntraPass security management software using only a few taps on your mobile device. The easy-to-use mobile app offers anytime, anywhere real-time management of over 20 security tasks. Manage/create cards, lock/unlock doors, request reports and more. EntraPass Go is available for download on the App Store and Google Play.

SmartLink for Advanced System Integration and Automation

The SmartLink application enables operators to integrate EntraPass with most intelligent devices such as video multiplexers, HVAC systems, LCD panels, video matrix switchers, etc. SmartLink uses an RS-232, API or network connection between EntraPass and the external device. With the SmartLink Task Builder, EntraPass reaches new levels in task automation. A series of tasks, similar to macros, can be created and triggered on any event and component in the system. When an event occurs, the tasks are then executed by the system.

WebViews Provide An Enhanced Operator Experience

WebViews enhance the EntraPass user experience. They allow you to embed a web page or file and integrate this graphic into the desktop. You can import a building floor plan and add objects, such as doors and relays, directly onto the floor plan for a visual representation of applications in various locations across the world.



Kantech Advantage Program

As EntraPass security management software continues to deliver new features and enhancements, it is important to have the productivity tools and training support to effectively use this solution. The Kantech Advantage Program (KAP) allows you to stay current with your EntraPass software installation using tokens. The number of tokens required is based on the EntraPass options activated.

Video Integration

Real-time monitoring capability is a response to the growing importance of video in access control systems. Integration with Exacq video management systems and American Dynamics DVRs/NVRs (VideoEdge, HDVR, ADTVR and Intellex) provides real-time video monitoring as well as video playback. Video can be linked to access events (such as "door forced open") and recorded from one to sixteen cameras from compatible DVR/NVR simultaneously. All cameras can be called up directly from a floor plan simply by double-clicking on the camera or dome icon.

Take a closer look

EntraPass Video Vault

Video Vault offers an alternative to manually saving each video clip one-by-one. Simply pre-define groups for the video clips such as door forced open or access denied. Video Vault then saves the clips to the appropriate group based on whatever schedules are chosen. Video clips can also be organized as .bmp images in lieu of icons. It can connect up to 128 Exacq and/or American Dynamics DVRs/NVRs (VideoEdge, HDVR, ADTVR and Intellex) via integration with EntraPass software and can archive the imported video to as many as 24 digital storage devices.

Alarm Panel Integration



By integrating all security assets such as intrusion detection, access control, video and telephone entry into one common platform, users can interface with just one system, for greater simplicity and

optimum control. Kantech offers integration kits to connect a DSC intrusion alarm panel to a Kantech access control system to create a single unified solution. Data integration with DSC PowerSeries or MAXSYS intrusion alarm panels allows the access control system to receive intrusion events, view zone status and to manage partitions/user codes.

Telephone Entry Integration

Apartment, condominium and office buildings are just a few of the applications where security and communications are required for controlling resident and visitor traffic. The Kantech Telephone Entry System (KTES) delivers a fully integrated telephone entry and access control solution. The KTES provides visitor/resident entry, tracking and reporting. It uses a touch-tone phone style keypad that offers both familiarity and ease of use. Two-way audio is built-in. Video verification can be integrated to enhance the solution.

Basic System Diagram



Minimum System Requirements

Processor (without video integration) . . .	Dual Core
Processor (with video integration) . . .	Quad Core
RAM	4GB (8GB with video integration)
Free Hard Disk Space for Software . . .	50GB
Color Depth.	24-bit (16 million colors), required for video integration
Screen Resolution	1024 x 768
Graphic Adapter Card	PCI Express graphics card with 512MB (1GB with video integration) memory and DirectX 9.0 support

Network Interface Card	10/100 Base-T network adaptor (Gigabit or Greater with Video Integration)
----------------------------------	---

Operating System Compatibility

Windows XP Pro in 32-bit version, Server 2003/2008 Standard/Enterprise, Vista Pro and Windows 7 Pro (all in 32 and 64-bit versions), Windows 8 (limited to access control function only). All operating systems should have their latest Service Packs and updates. **For integration, validate specifications of products used.**

Virtual Environment Supported VMware Workstation v7 & higher

System Capacities

Cards	Unlimited
Card Families or Site Codes	Unlimited
Door Controllers	17,408 per Multi-Site Gateway
Card Readers/Keypad	
KT-300	34,816 per Multi-Site Gateway
KT-400	69,632 per Multi-Site Gateway
Monitored Points (Inputs)	
KT-300	278,528 per Multi-Site Gateway
KT-400	4,456,448 per Multi-Site Gateway
Auxiliary Outputs for Reader	
LEDs and Door Alarms	69,632 (KT-300)
Elevator Floors per Cab	64
Card User Access Levels	250 per site
Access Level Combinations	Unlimited
Schedules	100/site
Time Intervals per Schedule	KT-300 (4), KT-400 (20)
Holidays	366 per system
Operator Workstations	20 + 1 on the server
Concurrent EntraPass Web Logins	50
Multi-Site Gateways	41
System Operator Passwords	Unlimited
Operator Security Levels	Unlimited, pre-defined (3)
Concurrent System Languages	Two
Number of Printers	One log printer, one report printer, and one badge printer per workstation
Serial Port / USB	Max. 32 per Multi-Site Gateway
Remote Sites	Max. 512 per Multi-Site Gateway

Integration Capabilities

Intrusion	DSC and MAXSYS Alarm Panels (PC1616, PC1832, PC1864, PC4020)
---------------------	--

Video

Exactq video management systems and American Dynamics DVRs/ NVRs (VideoEdge, HDVR, ADTVR and Intellex). Intellex Ultra, DVMS and IP all require software v3.1 or higher, Intellex LT requires software v2.6 or higher. Panasonic video recorders (requiring option E-COR-DVR-1): WJ-HD309A/316A/616/716, WJ-ND200/300/400.

Model Numbers

Each EntraPass Corporate Edition software package includes: two additional Workstation licenses, one Server/Workstation license, one Multi-Site Gateway license and one WebStation license.

Software

E-COR-EN-V6	EntraPass Corporate Edition software and English user manual
E-COR-FR-V6	EntraPass Corporate Edition software and French user manual
E-COR-V6-LIC	EntraPass Corporate Edition software license
E-COR-V6	EntraPass Corporate Edition software
E-COR-UPG-V6-EN	EntraPass Corporate Edition software upgrade from v3.xx to v6.xx and English user manual
E-COR-UPG-V6-FR	EntraPass Corporate Edition software upgrade from v3.xx to v6.xx and French user manual
E-COR-UPG-V6-LIC	EntraPass Corporate Edition software upgrade license

Additional Workstation and Gateway Licenses

E-COR-WS1	License for 1 Workstation (v3.xx and higher)
E-COR-WS6	License for 6 Workstations (v3.xx and higher)
E-COR-COM	License for 40 Multi-Site Gateways (v3.xx and higher)

Options

E-COR-RDN	License for 1 Redundancy Server (v3.xx and higher)
E-COR-SQL	License for 1 Card Gateway - MS SQL Database Interface (v3.xx and higher)
E-COR-VVM	License for 1 EntraPass Video Vault (v3.xx and higher)
E-COR-WEB-1	License for 1 concurrent WebStation login (v4.xx and higher)
E-COR-WEB-3	License for 3 concurrent WebStation logins (v4.xx and higher)
E-COR-WEB-10	License for 10 concurrent WebStation logins (v6.01 and higher)
E-COR-WEB-25	License for 25 concurrent WebStation logins (v6.01 and higher)
E-COR-DVR-1	License for single 3rd party DVR (v5.02 and higher)

Kantech Advantage Program (KAP) Tokens

E-COR-KTK-1	1 Kantech Token
E-COR-KTK-2	2 Kantech Tokens
E-COR-KTK-3	3 Kantech Tokens
E-COR-KTK-5	5 Kantech Tokens
E-COR-KTK-10	10 Kantech Tokens

User Manuals

E-COR-MAN-EN	EntraPass Corporate Edition English user manual
------------------------	---

Related Products



DSC PowerSeries and MAXSYS Alarm Panels



Intellex DVRs



EntraPass Go Mobile App

Approvals



www.kantech.com